



Woburn Avenue, Epping, CM16

BUTLER  STAG



A recently refurbished three bedroom bungalow in the heart of Theydon Bois. Located in this popular turning amongst similar character homes just off the village green and within walking distance of the local shops, primary school and central line station.



- Three Bedroom Bungalow
- Great Location
- Detached
- Recently Refurbished
- Good Transport Links
- Driveway

Ground floor accommodation comprises a fully fitted kitchen, separate living room, reception room, double bedroom and a downstairs family bathroom. On the first floor are two bright double bedrooms with plenty of eave storage.

Externally, the property benefits from a private rear garden.

The village is arranged around the green, complete with duck pond, and offers a parade of shops, several pubs and restaurants and easy access into Epping Forest. Transport links into London are excellent and there are several well-regarded state and private schools within easy reach. Local leisure facilities include golf courses, sports centres and a tennis club.

Council Tax Band E

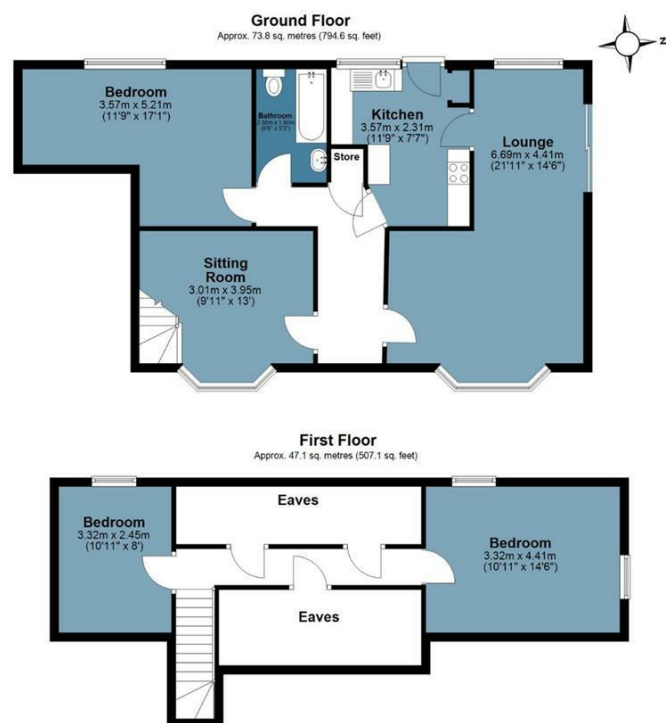




Woburn Avenue

Approx. Gross Internal Area 120.9 sq. metres (1301.7 sq. feet)

BUTLER & STAG



Measurements are approximate and for illustration purposes only. While we do not doubt the accuracy and completeness, we advise you conduct a careful independent assessment of the property to determine monetary value
© @modephoto.uk www.modephoto.co.uk

IMPORTANT NOTICE - These particulars have been prepared in good faith and they are not intended to constitute part of an offer or contract. We have not performed a structural survey on this property and the services, appliances and specific fittings have not been tested. All photographs, measurements, floor plans and distances referred to are given as a guide and should not be relied upon.

BUTLER & STAG

☎ 01992 667666

🏠 4 Forest Drive, Theydon Bois, Essex, CM16 7EY

✉ theydon@butlerandstag.com

www.butlerandstag.uk